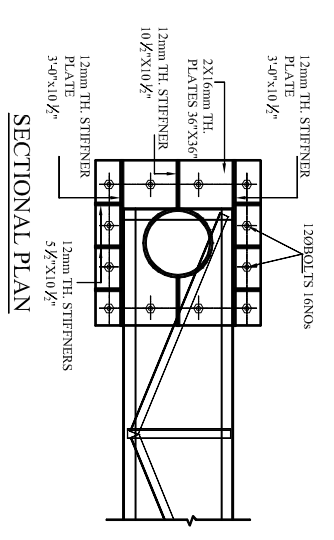
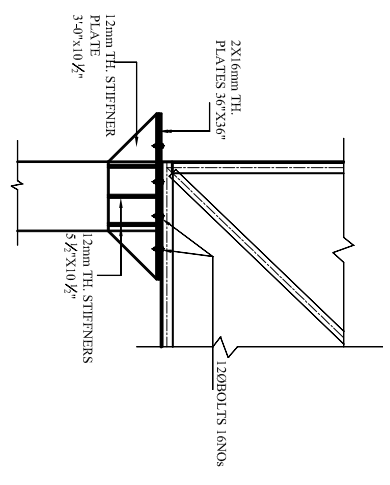


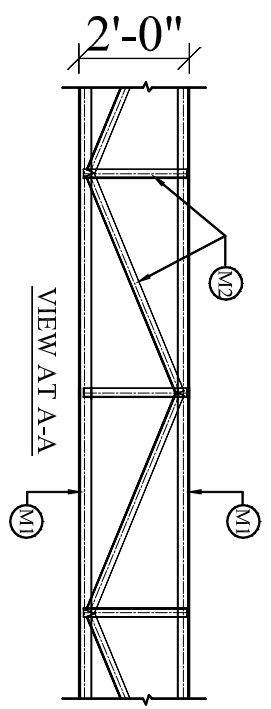
PROPOSED GANTRY DESIGN
FOR SPANS 101'-0" TO 120'-0"



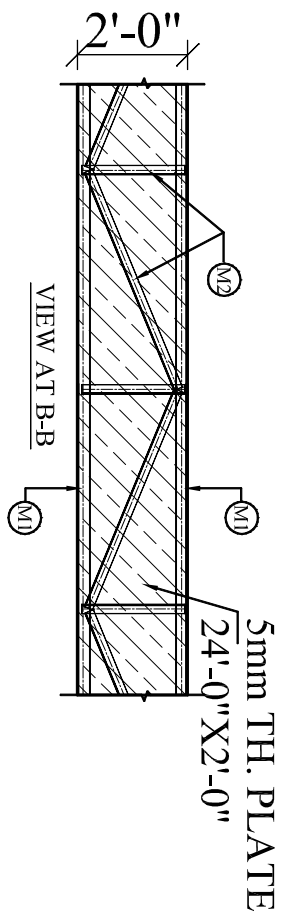
SECTIONAL PLAN



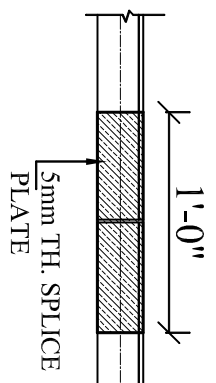
SECTIONAL ELEVATION
DETAIL OF JOINT 1



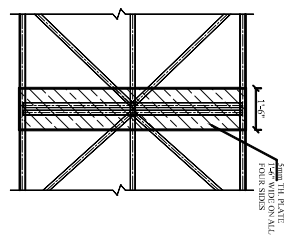
VIEW AT A-A



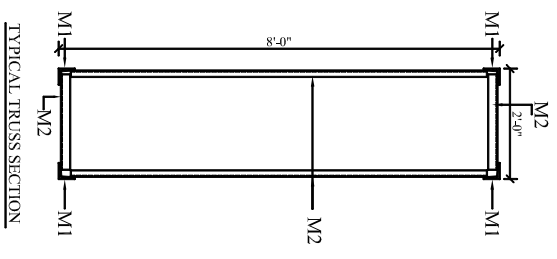
VIEW AT B-B



TYPICAL DETAIL OF SPLICE OF ANGLE PLATE



TYPICAL JOINTING DETAIL OF TRUSS TO JOIN TWO PARTS SHORTENED FOR TRANSPORTATION



TYPICAL TRUSS SECTION

REFERENCE/REVISIONS

NO.	REVISION/ISSUE	DATE

TITLE :- DETAIL OF JOINTS AND CONNECTIONS
SPAN: 101'-0" TO 120'-0"

DRG. NO. : SLOGIX/01X120X2003	SCALE: NTS
DATE: 31.08.15	DEALT BY: :
S.NO. :	CONSULTANT
	OWNER

PROJECT CONSULTANT