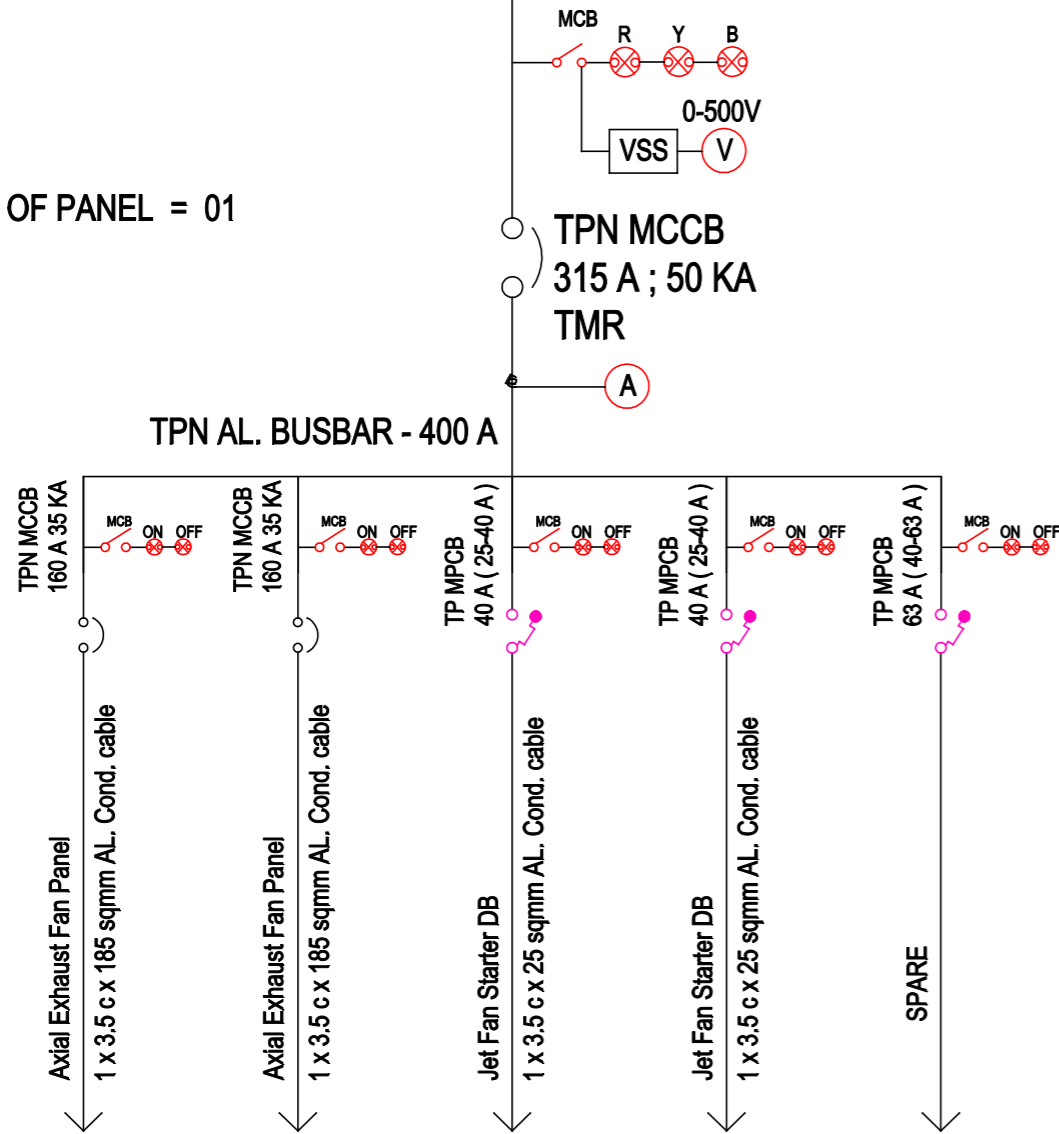


I/C CABLE 1 NO x 3.5c x 300 sqmm AL. COND.
Armed FROM L.T PANEL

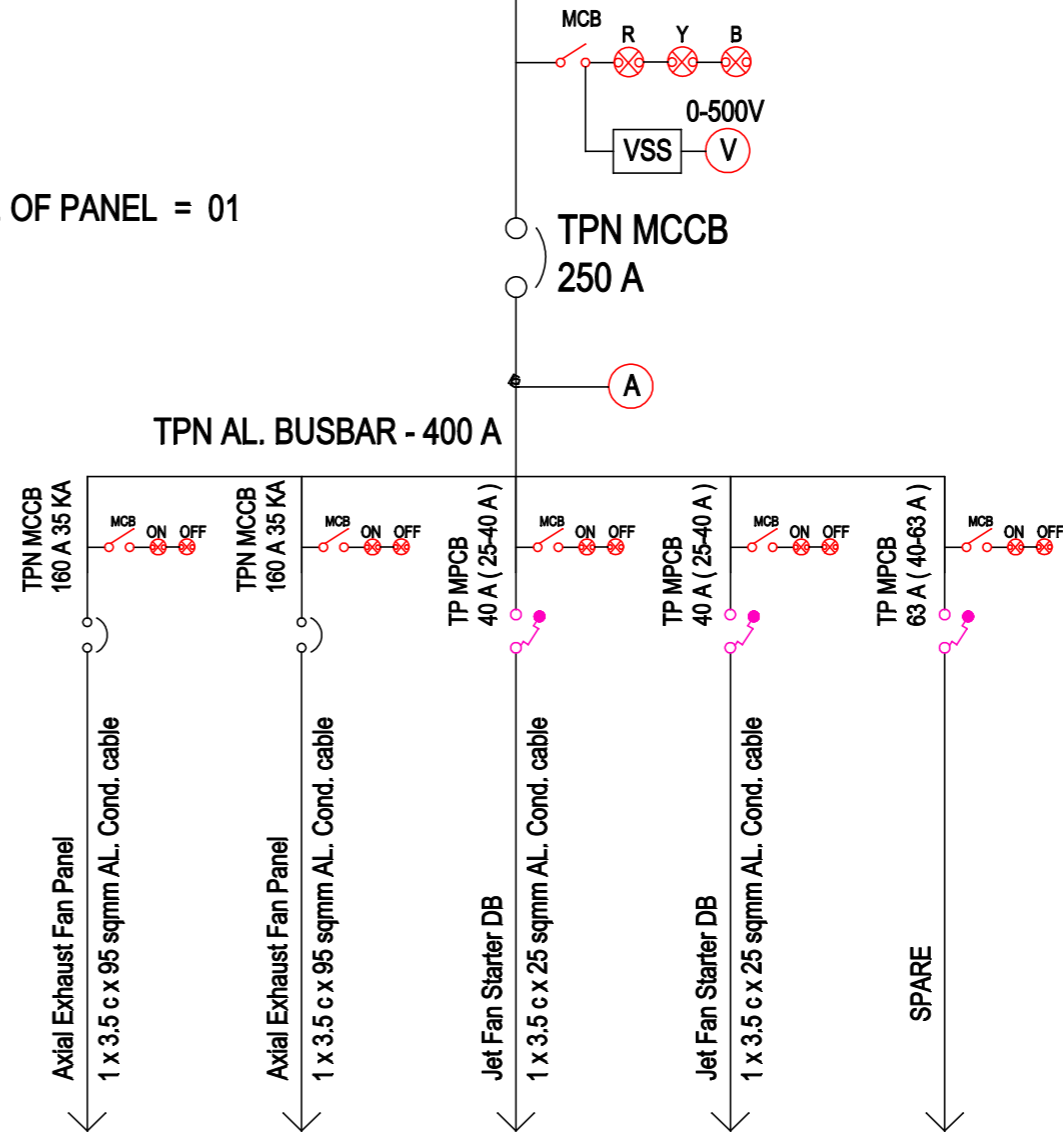
NO. OF PANEL = 01



LOWER BASEMENT FLOOR

I/C CABLE 1 NO x 3.5c x 185 sqmm AL. COND.
Armed FROM L.T PANEL

NO. OF PANEL = 01



UPPER BASEMENT FLOOR

LEGEND	SAFETY / INDICATION DEVICES
	(MCB ,SP/TP/4P) MINITURE CIRCUIT BREAKER
	(MCCB ,TPN/4P) MOULDED CASE CIRCUIT BREAKER
	INDICATION LAMP
	DG SET
	HT/LT TRANSFORMER
	CONTACTOR ,TP/4P
	(ACB ,TPN/4P) AIR CIRCUIT BREAKER
	(TP/TPN) MOTOR PROTECTION CIRCUIT BREAKER WITH BUILT IN THERMAL O/L RELEASE VARIABLE
	11KV GO SWITCH WITH DROP OUT FUSES
	MULTI FUNCTION METER
	AUTO MANUAL SWITCH
	RCCB/ ELCB -(TP/NDP)
	START / STOP PUSH BUTTON
	MOTOR - KW
	DUAL ENERGY METER (TO READ SEB / DG POWER CONSUMPTION)
	PER PHASE ISOLATION WITH SEPARATE 'N' FOR EACH PHASE
	VOLTMETER WITH SELECTOR SWITCH
	AMMETER WITH SELECTOR SWITCH

PROJECT:
UNDER GROUND PARKING FOR IMPROVEMENT TRUST AMRITSAR

SHEET TITLE:
L.T PANEL OF MECHANICAL VENTILATION FOR LOWER & UPPER BASEMENT FLOOR .

DRG.NO. SLD-7
DATE: 02.05.2013
REVISION:
ENGINEER:

BALWINDER SINGH ENGG. CONSULTANTS

OFFICE:24/8,INDUSTRIAL AREA,PHASE-II,CHANDIGARH
BRANCH OFFICE:W2/313,TEACHERS COLONY,HIRA MAHAL,NABHA.
PHONE NO.9872456534,9501105681

