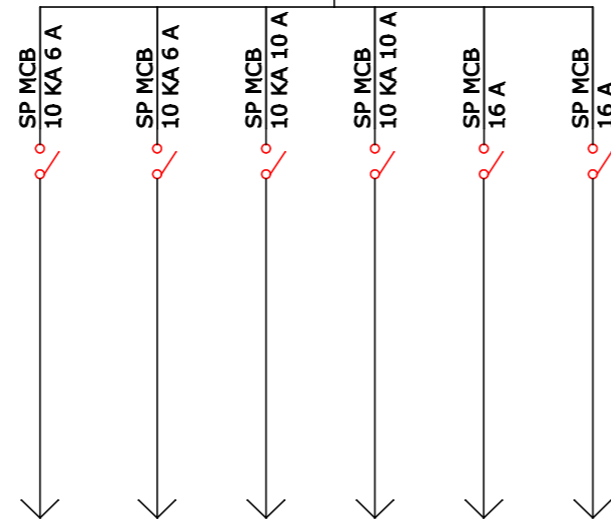


I/C CABLE 3CX 6 sqmm Copper Cond.
FRLS in cond. pipe from L.T PANEL

SPN DB - 8 WAY
DOUBLE DOOR IP - 42

DP RCBO 10 KA
32 A ; 100 mA



NO. OF DB'S = 03

| LEGEND | SAFETY / INDICATION DEVICES |
|--------|--|
| | (MCB ,SP/TP/4P) MINITURE CIRCUIT BREAKER |
| | (MCCB ,TPN/4P) MOULDED CASE CIRCUIT BREAKER |
| | INDICATION LAMP |
| | DG SET |
| | HT/LT TRANSFORMER |
| | CONTACTOR ,TP/4P |
| | (ACB ,TPN/4P) AIR CIRCUIT BREAKER |
| | (TP/TPN) MOTOR PROTECTION CIRCUIT BREAKER WITH BUILT IN THERMAL O/L RELEASE VARIABLE |
| | 11KV GO SWITCH WITH DROP OUT FUSES |
| | MULTI FUNCTION METER |
| | AUTO MANUAL SWITCH |
| | RCCB/ ELCB -(TPN/DP) |
| | START / STOP PUSH BUTTON |
| | MOTOR - KW |
| | DUAL ENERGY METER (TO READ SEB / DG POWER CONSUMPTION) |
| | PER PHASE ISOLATION WITH SEPARATE 'N' FOR EACH PHASE |

REFER DRG. NO. - ELP-05,ELP-06

PROJECT:
UNDER GROUND PARKING FOR
IMPROVEMENT TRUST AMRITSAR

SHEET TITLE:
SCHEMATIC ELECTRICAL DRAWING OF SPN DB FOR
LIFT WELL, RAMP AREA , LBF & UBF ENTRY AREA

DRG.NO. SLD-6 ENGINEER:
DATE: 02.05.2013
REVISION:

BALWINDER SINGH ENGG. CONSULTANTS
OFFICE:24/8,INDUSTRIAL AREA,PHASE-II,CHANDIGARH
BRANCH OFFICE:W2/313,TEACHERS COLONY,HIRA MAHAL,NABHA.
PHONE NO.9872455534,9501105681

