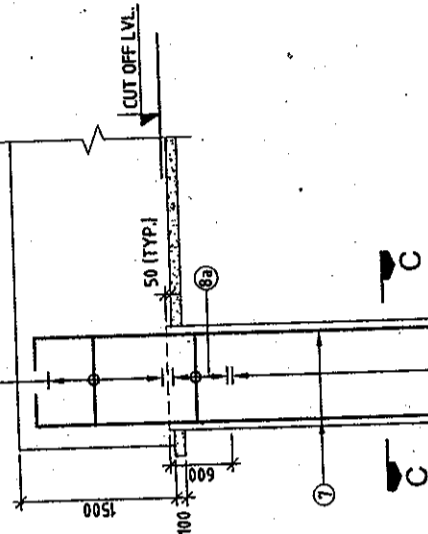
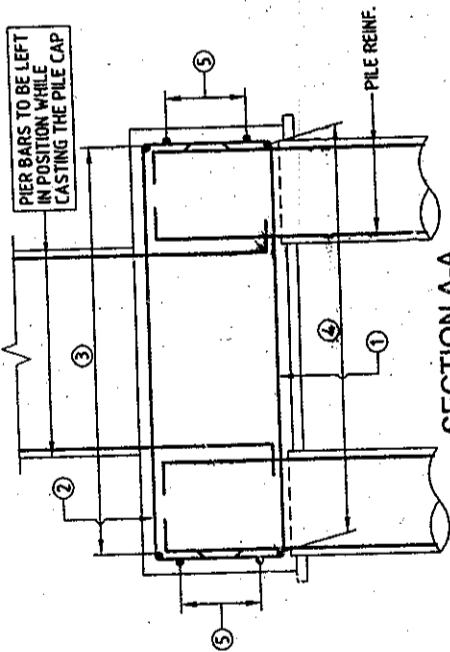


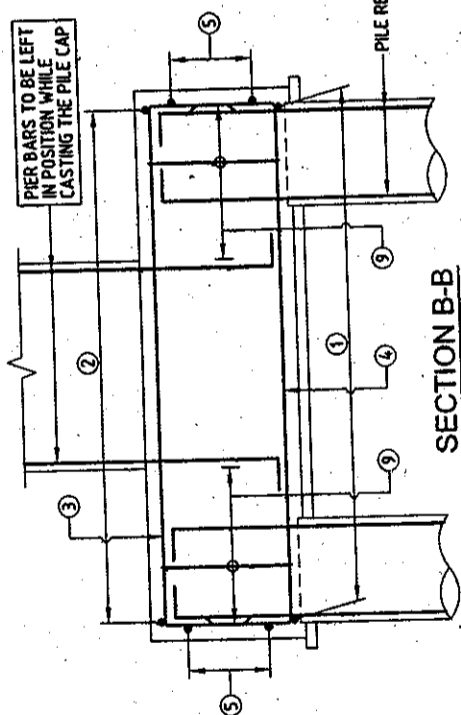
PLAN  
(SHOWING PILE CAP REINFORCEMENT)  
(SCALE 1:50)



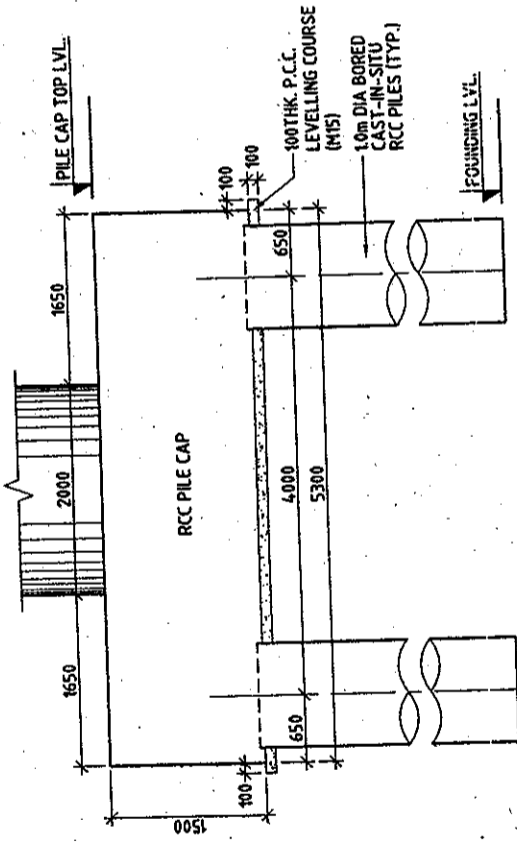
SECTION C-C  
(SCALE 1:20)



SECTION A-A  
(SCALE 1:50)



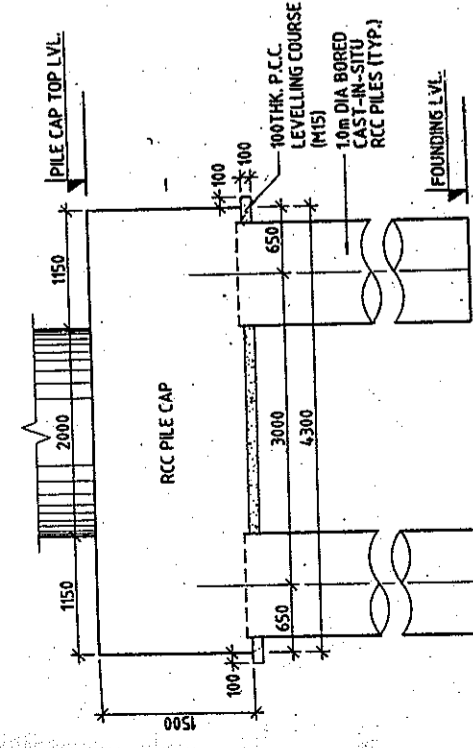
SECTION B-B  
(SCALE 1:50)



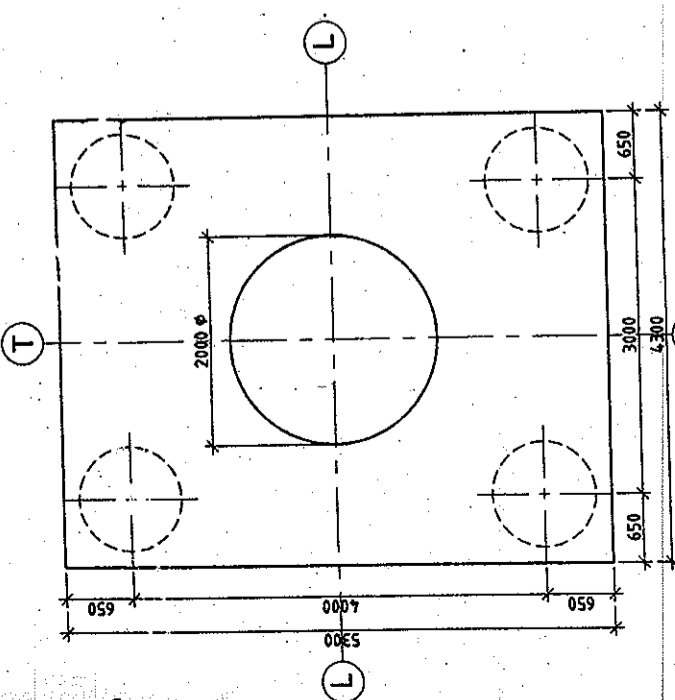
ELEVATION ALONG T-T AXIS  
(SCALE 1:50)

LEVELS CHART FOR PILE CAP LAYOUT

PIER DESIGNATION	BED LEVELS (TOP OF PILE CAP CUT OFF LEVELS)	FOUNDING LEVELS
P43	243.135	242.635
P44	243.140	242.640
P48	243.093	242.593
P50	243.113	242.613
P51	243.077	242.577
		227.127



ELEVATION ALONG L-L AXIS  
(SCALE 1:50)



PLAN AT TOP OF PILE CAP  
(SHOWING DIMENSIONS)  
(SCALE 1:50)

LEVELS CHART FOR PILE CAP LAYOUT

PIER DESIGNATION	BED LEVELS (TOP OF PILE CAP CUT OFF LEVELS)	FOUNDING LEVELS
P2	244.408	242.458
P3	244.395	242.445
P6	244.442	242.492
P10	244.349	242.399
P13	243.835	241.885
P16	243.858	241.908
P19	244.011	242.061
P25	243.552	241.602
P28	243.261	241.311
P29	243.246	241.296
P32	243.279	241.329
P33	243.295	241.345
P36	243.128	241.178
P39	243.179	241.229
P40	243.157	241.207

- NOTES:-**
- ALL DIMENSIONS ARE IN mm AND LEVELS IN METRES, UNLESS OTHERWISE MENTIONED. ONLY WRITTEN DIMENSIONS ARE TO BE FOLLOWED. NO DIMENSION IS TO BE SCALED.
  - CONCRETE SHALL BE DESIGN MIX WITH A MINIMUM 28 DAYS CHARACTERISTIC STRENGTH OF 35mpa FOR BORED CAST-IN-SITU PILE AND PILE CAP.
  - CLEAR COVER TO SHALL BE AS FOLLOWS.  
(i) FOR PILE --- 75mm  
(ii) FOR PILE CAP --- 75mm
  - TMT HIGH YIELD STRENGTH DEFORMED BARS SHALL BE OF GRADE DESIGNATION Fe-415 CONFORMING TO IS:1786 SHALL ONLY BE USED.
  - MINIMUM BOND LENGTH SHALL BE 42 x DIA OF BAR.
  - MINIMUM LAP LENGTH FOR REINFORCEMENT BAR SHALL BE 72 x DIA OF BARLAPS SHALL BE STAGGERED AND NOT MORE THAN 50% OF BARS SHALL BE LAPPED AT ANY ONE SECTION.
  - LL REPRESENTS LONGITUDINAL AXIS OF BRIDGE AND TT REPRESENTS TRANSVERSE AXIS OF BRIDGE.
  - ACTUAL LOAD TEST SHALL BE CARRIED OUT ON A TEST PILE AS PER STANDARD SPECIFICATIONS TO DETERMINE VERTICAL AND LATERAL CAPACITY OF PILE. IT SHALL HOWEVER BE ENSURED THAT IT IS NOT LESS THAN DESIGN VALUES.

- REFERENCE DRAWINGS:-**
- 1213/SHEC/LUDHIANA/24+686/G-01 (SHEET 1 OF 10 TO 10 OF 10)
  - 1213/SHEC/LUDHIANA/24+686/E-03 (SHEET 2 OF 2)

**REINFORCEMENT DETAIL:**

BAR MKD.	DIA (mm)	SPACING/Nos.	SHAPE
1	25	19 Nos.	┌
2	16	150	┌
3	16	150	┌
4	25	38 Nos.	┌
5	16	8 Nos.	┌
7	25	20 Nos.	┌
8	10	200	○
8a	10	100	○
9	16	150	┌ 4 LEGGED

**LEGENDS:**  
--- BAR ON TOP FACE  
--- APPROVED FOR EXECUTION  
ISSUED

**APPROVED FOR EXECUTION**

Assistant Engineer  
Design (IP)  
M/S/210

Executive Engineer  
Design (IP)  
M/S/210

Chief Engineer  
(IP)  
M/S/210

SRINJAN P.W.D. (B & R)

**DETAILED PROJECT REPORT**  
**DIMENSIONAL & REINFT. DETAILS OF PILE, PILE CAP, PIER & PIER CAP**  
(SHEET 1 OF 2)

SCALE: AS SHOWN  
SHEET SIZE: A2

REVISAS PER FB/PWD COMMENTS  
FIRST ISSUE  
DETAILS OF REVISION

REV	DATE	DRAWN	CHECKED	APPROVED
R1	28/08/2009	MKS	VNM	S LAHIRI
R0	28/05/2009	MKS	VNM	S LAHIRI

PREPARATION OF DETAILED PROJECT REPORT  
FOR UPGRADATION OF SOUTHERN B-YE-PASS  
LUDHIANA

CONSULTANT: **SMEC**  
SMEC (P) LTD.  
DLF BUILDING TOWER 29/FLOOR  
CHOKI CHOKI PHASE-II GURGAON,  
HARYANA, INDIA-122002  
TEL: 0124-4300002, 4301100

CLIENT: **PIDB**  
PUNJAB INFRASTRUCTURE DEVELOPMENT BOARD  
H-13 Structure VIZIBLYNAL DPR Revised Drawings R2 (Feb 07) Bridge Ch. 24+685 LEVATED GIL24+686 E-03.dwg

CAD File Ref: 10