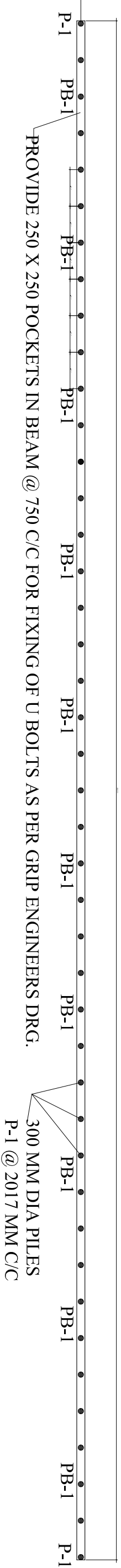
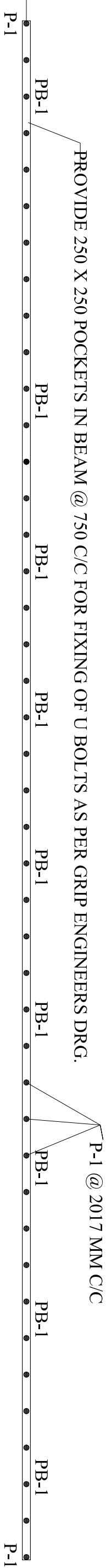


**BAY LENGTH
85000 O/O**



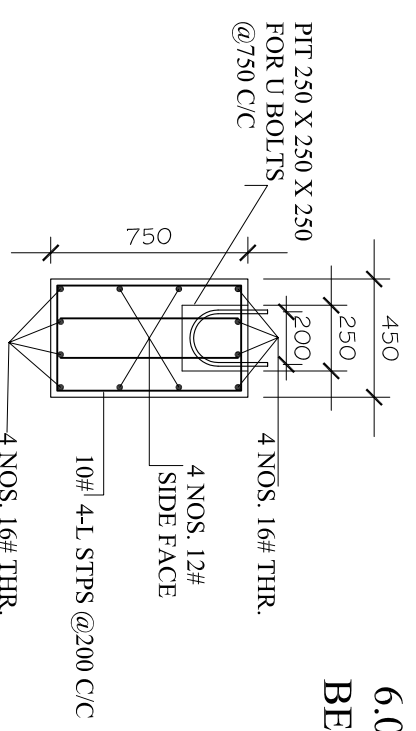
29000 C/C



PROVIDE 250 X 250 POCKETS IN BEAM @ 750 C/C FOR FIXING OF U BOLTS AS PER GRIP ENGINEERS DRG.

**PLAN FOR RAIL LINE FONDATION OF 5.0 T GOLIATH CRANE
PILES LAYOUT PLAN**

PILES = 300 MM DIA @ 2.0 M C/C
6.0 M DEPTH PILES WITH SINGLE BULB
BEAM PB-1 = 450 X 750 (AT PLINTH LVL)
TO BE TIED THROUGH ALL PILES



BEAM PB-1
GRADE BEAM PB-01 AT TOP OF PILES
ENLARGED SECTION

NOTE :-

1. USE M-25 CONC.
 2. USE TMT STEEL GRADE Fe 500
 3. MINIMUM COVER TO STEEL REINF
IN COLUMNS = 40 mm
IN FOOTINGS = 60 mm
IN WALLS = 40 mm
 4. LAP LENGTH FOR BARS = 50XDIA OF BAR
 5. ALL DIMENSIONS TO BE FOLLOWED AS PER ARCHITECTURAL DRAWINGS.
- FOOTINGS REVISED AS PILE FOUNDATIONS

PROJECT:- M/S ISGEC HEAVY ENGG. WORKS AT RATTANGARH UNIT, YAUMNA NAGAR	
DRG TITLE:- PILES & BEAM LAYOUT PLAN FOR GOLIATH CRANE LINE FOUNDATION	
DRG NO.:- STD-04	CHD BY.
DRN BY:- MAHESH	DATE:- 03 02 2015
STRUCTURE CONSULTANTS A. S. PAIK & ASSOCIATES 1891/A MAHARAJ NAGAR CIRCUIT HOUSE ROAD, LUDHIANA. PH : 2402859 94170-32859	