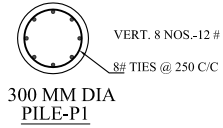


PILE-P1



SECTION AT A-A

- NOTES :-**
1. USE M-25 CONC.
 2. USE TMT STEEL GRADE Fe 500
 3. MINIMUM COVER TO STEEL REINFORCEMENT .
IN COLUMNS = 40 MM
IN FOOTINGS = 60 MM

PROJECT:-	ISGEC HEAVY ENGG. WORKS RATTANGARH UNIT, YAUMNA NAGAR, HARYANA		
DRG TITLE:-	GOILATH CRANE RAIL LINE FOUNDATIONS PILES AND PILE CAP BEAM STR. DTLS.		
DRG NO:-	STD-05	CHD BY.	
DRN BY:-	MAHESH	DATE:-	03-02-2015
STRUCTURE CONSULTANTS			
A. S. PAIK & ASSOCIATES 1891/A MAHARAJ NAGAR CIRCUIT HOUSE ROAD, LUDHIANA. PH : 2402859 94170-32859			