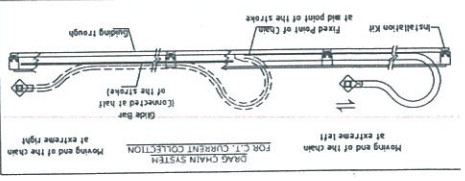
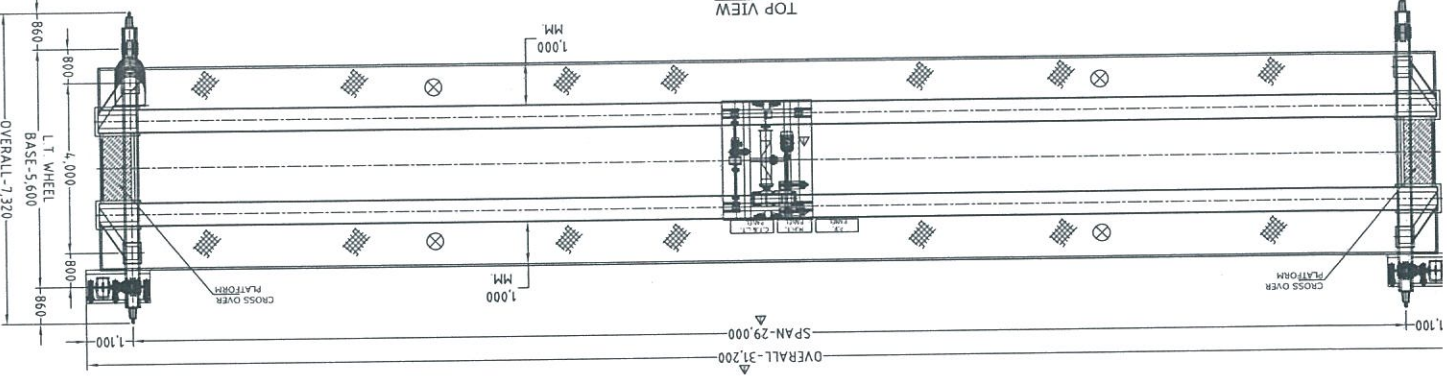
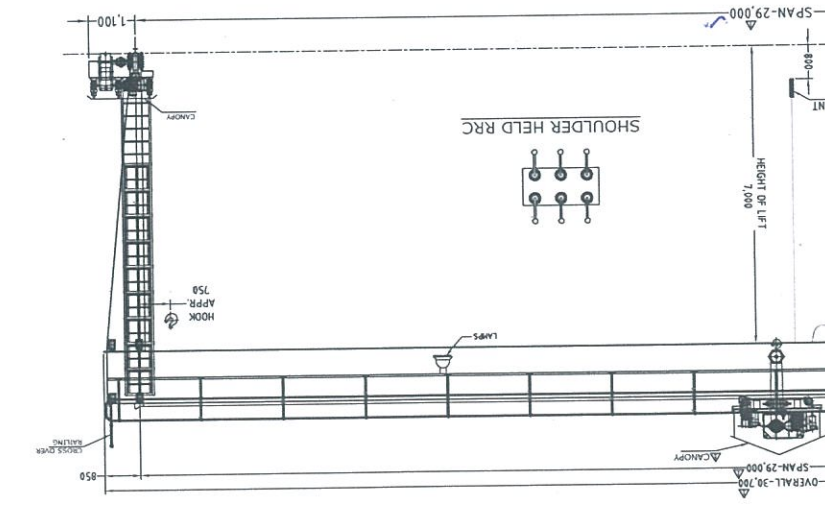
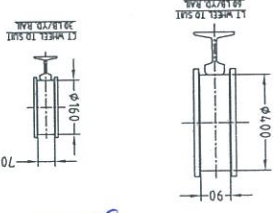
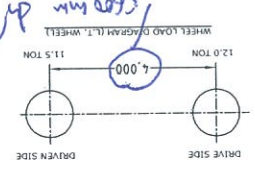
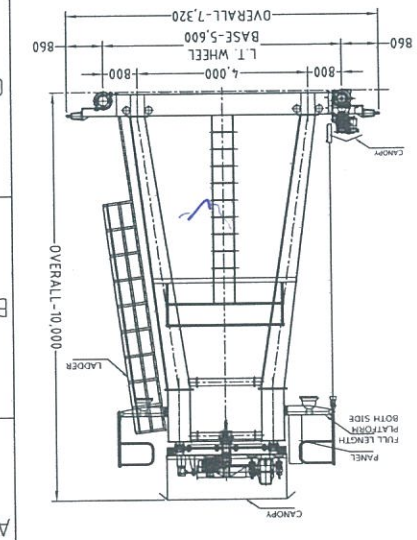


RevNo	01	Revision note	As per your e-mail dt-05/01/2015
Date	07/01/2015	Signature	DEPAK R ARYA
Checked			



- NOTES -
- 1 ALL DIMENSIONS ARE IN MM UNLESS OTHERWISE SPECIFIED
  - 2 SUPPLY, INSTALLATION & ALIGNMENT OF L T RAIL RAIL CLAMPS, SOLE PLATES, FOUNDATION BOLTS FOR 85mm BAY LENGTH WILL BE UNDER "WHEL" SCOPE
  - 3 HOOK SHALL HAVE SAFETY LATCH
  - 4 GROUP LUBRICATION TO BE PROVIDED FOR END CARRIAGE & CRAB TROLLEY
  - 5 JACKING PADS TO BE PROVIDED FOR C T & L T
  - 6 4X250W METAL HALIDE LAMPS OF BAJAJ/PHILIPS/ GE MAKE TO BE PROVIDED
  - 7 ON/OFF ON PENDANT & REMOTE.

Client :- M/s. ISGEC HEAVY ENGINEERING LTD	Job Reference No. :- 1327
Designed by DEPAK	Checked by AMIT
Approved by - date R ARYA-01/01/2015	Filename DES-1327
Date 01/01/2015	Scale NTS
REV 01	Sheet 1/2




G.A. DRAWING FOR 5.0 T DG-GOLIATH CRANE  
DWG NO.-GEPL/1327/01

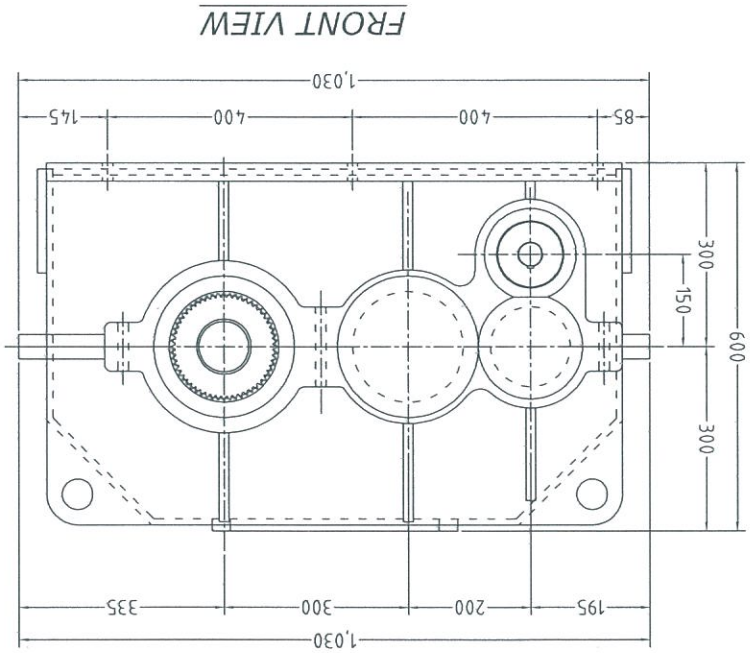
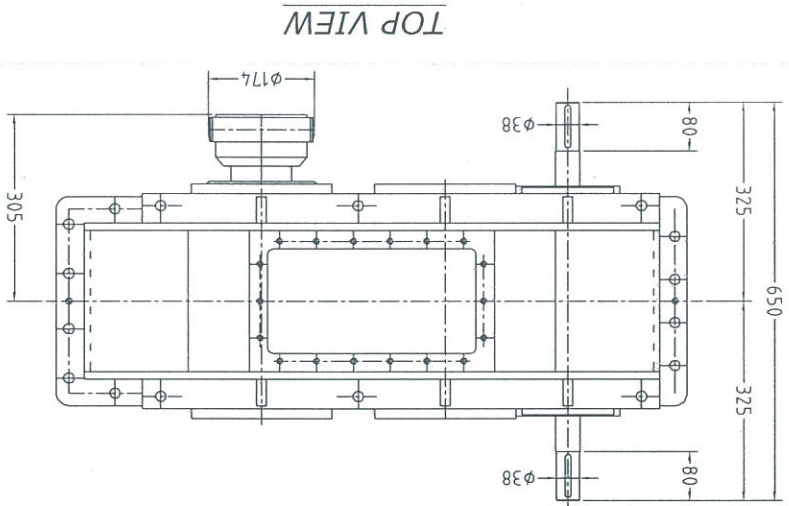
Approved for manufacturing  
Bhim Nirmal Singh  
08/01/15

DESCRIPTIONS		MAIN HOIST		DESCRIPTIONS		CROSS TRAVEL		LONG TRAVEL	
TYPE OF LIMIT SWITCH	GEAR/ROTARY + GRAVITY	TYPE OF LIMIT SWITCH	2-WAY LEVER	TYPE OF LIMIT SWITCH	2-WAY LEVER	TYPE OF LIMIT SWITCH	2-WAY LEVER	TYPE OF LIMIT SWITCH	2-WAY LEVER
RATING	10 AMP	RATING	10 AMP	RATING	10 AMP	RATING	10 AMP	RATING	10 AMP
MAKE	S-N-S/S-0-C/S-AGE	MAKE	S-N-S/S-0-C/S-AGE	MAKE	S-N-S/S-0-C/S-AGE	MAKE	S-N-S/S-0-C/S-AGE	MAKE	S-N-S/S-0-C/S-AGE
QUANTITY	ONE-ONE	QUANTITY	ONE	QUANTITY	ONE	QUANTITY	ONE	QUANTITY	ONE
TYPE OF COUPLING	GEARED FLEXIBLE	TYPE OF COUPLING	GEARED COUPLING	TYPE OF COUPLING	GEARED COUPLING	TYPE OF COUPLING	GEARED COUPLING	TYPE OF COUPLING	GEARED COUPLING
BETWEEN MOTOR & G BOX	GEARED DRUM GEARED	BETWEEN MOTOR & G BOX	BRAKE DRUM GEARED	BETWEEN MOTOR & G BOX	BRAKE DRUM GEARED	BETWEEN MOTOR & G BOX	BRAKE DRUM GEARED	BETWEEN MOTOR & G BOX	BRAKE DRUM GEARED
BETWEEN G BOX & DRUM	INTEGRAL HALF GEARED	BETWEEN WHEEL TO WHEEL	INTEGRAL HALF GEARED	BETWEEN WHEEL TO WHEEL	INTEGRAL HALF GEARED	BETWEEN WHEEL TO WHEEL	INTEGRAL HALF GEARED	BETWEEN WHEEL TO WHEEL	INTEGRAL HALF GEARED
SIZE	200 DIA * 105	SIZE	100ø * HR-101	SIZE	100ø * HR-101	SIZE	100ø * HR-101	SIZE	100ø * HR-101
MAKE	GRIP	MAKE	GRIP	MAKE	GRIP	MAKE	GRIP	MAKE	GRIP
QUANTITY	TWO-ONE	QUANTITY	ONE-FOUR	QUANTITY	SIX-TWO	QUANTITY	SIX-TWO	QUANTITY	SIX-TWO
TYPE OF BRAKE	EHT	TYPE OF BRAKE	EHT	TYPE OF BRAKE	EHT	TYPE OF BRAKE	EHT	TYPE OF BRAKE	EHT
SIZE	ø200/18kg	SIZE	ø150/18kg	SIZE	ø150/18kg	SIZE	ø150/18kg	SIZE	ø150/18kg
MAKE	CRANE CONTROL/ELECTROMAG/GRIP	MAKE	CRANE CONTROL/ELECTROMAG/GRIP	MAKE	CRANE CONTROL/ELECTROMAG/GRIP	MAKE	CRANE CONTROL/ELECTROMAG/GRIP	MAKE	CRANE CONTROL/ELECTROMAG/GRIP
QUANTITY	TWO	QUANTITY	ONE	QUANTITY	ONE	QUANTITY	FOUR * TWO (R.A)	QUANTITY	FOUR * TWO (R.A)
TYPE OF MOTOR	SO CAGE / 60% GDP / 300 SI PER H	TYPE OF MOTOR	SO CAGE / 60% GDP / 300 SI PER H	TYPE OF MOTOR	SO CAGE / 60% GDP / 300 SI PER H	TYPE OF MOTOR	SO CAGE / 60% GDP / 300 SI PER H	TYPE OF MOTOR	SO CAGE / 60% GDP / 300 SI PER H
K.W	7 KW	K.W / H.P	0.80KW	K.W / H.P	0.80KW	K.W	7 KW	K.W	7 KW
RPM OF MOTOR	970 RPM	RPM OF MOTOR	880 RPM	RPM OF MOTOR	880 RPM	RPM OF MOTOR	970 RPM	RPM OF MOTOR	970 RPM
CLASS OF INSULATION	CLASS 'F'	CLASS OF INSULATION	CLASS 'F'	CLASS OF INSULATION	CLASS 'F'	CLASS OF INSULATION	CLASS 'F'	CLASS OF INSULATION	CLASS 'F'
MAKE	BBU/CGI/ABB	MAKE	BBU/CGI/ABB	MAKE	BBU/CGI/ABB	MAKE	BBU/CGI/ABB	MAKE	BBU/CGI/ABB
QUANTITY	ONE	QUANTITY	ONE	QUANTITY	TWO	QUANTITY	TWO	QUANTITY	TWO
TYPE / SIZE	HELICAL /HR-500-150	TYPE / SIZE	HELICAL /VR-320	TYPE / SIZE	HELICAL /VC-550	TYPE / SIZE	HELICAL /VC-550	TYPE / SIZE	HELICAL /VC-550
REDUCTION RATIO	74.96:1	REDUCTION RATIO	29.49:1	REDUCTION RATIO	42.63:1	REDUCTION RATIO	42.63:1	REDUCTION RATIO	42.63:1
MAKE	GRIP	MAKE	GRIP	MAKE	GRIP	MAKE	GRIP	MAKE	GRIP
QUANTITY	ONE	QUANTITY	ONE	QUANTITY	TWO	QUANTITY	TWO	QUANTITY	TWO
ROOT DIAMETER	250 mm	TREAD DIAMETER	160 mm	TREAD DIAMETER	400 mm	TREAD DIAMETER	400 mm	TREAD DIAMETER	400 mm
OUTSIDE DIAMETER	290 mm	TREAD WIDTH	70 mm	TREAD WIDTH	90 mm	TREAD WIDTH	90 mm	TREAD WIDTH	90 mm
MATERIAL	IS-2062	TYPE	L-BLOCK	TYPE	L-BLOCK	TYPE	L-BLOCK	TYPE	L-BLOCK
QUANTITY	TWO	QUANTITY	FOUR	QUANTITY	FOUR	QUANTITY	FOUR	QUANTITY	FOUR
ROOT DIAMETER	200 mm	SIZE	30LB/yd	SIZE	60LB/yd	SIZE	60LB/yd	SIZE	60LB/yd
OUTSIDE DIAMETER	240 mm	BULB WIDTH	41 mm	BULB WIDTH	57 mm	BULB WIDTH	57 mm	BULB WIDTH	57 mm
MATERIAL	IS-2062	WEIGHT / METRE	15.0 kg/m	WEIGHT / METRE	30.0 kg/m	WEIGHT / METRE	30.0 kg/m	WEIGHT / METRE	30.0 kg/m
QUANTITY	ONE	SPECIFICATION	IS-34.3	SPECIFICATION	IS-34.3	SPECIFICATION	IS-34.3	SPECIFICATION	IS-34.3
OUTSIDE DIAMETER	242 mm	TYPE	SPRING (SSB-1)	TYPE	SPRING (SSB-1)	TYPE	SPRING (SSB-1)	TYPE	SPRING (SSB-1)
LENGTH	1,400 mm	QUANTITY	FOUR	QUANTITY	FOUR	QUANTITY	FOUR	QUANTITY	FOUR
MATERIAL	IS-2062								
QUANTITY	ONE								
IS SPECIFICATION	IS 2266:2002	MAIN BRIDGE GIRDER	FUSION WELDED PLATE BOX; MATERIAL AS PER IS:2062	MAIN BRIDGE GIRDER	FUSION WELDED PLATE BOX; MATERIAL AS PER IS:2062	MAIN BRIDGE GIRDER	FUSION WELDED PLATE BOX; MATERIAL AS PER IS:2062	MAIN BRIDGE GIRDER	FUSION WELDED PLATE BOX; MATERIAL AS PER IS:2062
NO. OF FALLS	FOUR	END CARRIAGE	FUSION WELDED PLATE BOX; MATERIAL AS PER IS:2062	END CARRIAGE	FUSION WELDED PLATE BOX; MATERIAL AS PER IS:2062	END CARRIAGE	FUSION WELDED PLATE BOX; MATERIAL AS PER IS:2062	END CARRIAGE	FUSION WELDED PLATE BOX; MATERIAL AS PER IS:2062
DIA / CONSTRUCTION	12 mm / 6x36	TROLLEY FRAME	FUSION WELDED PLATE BOX; MATERIAL AS PER IS:2062	TROLLEY FRAME	FUSION WELDED PLATE BOX; MATERIAL AS PER IS:2062	TROLLEY FRAME	FUSION WELDED PLATE BOX; MATERIAL AS PER IS:2062	TROLLEY FRAME	FUSION WELDED PLATE BOX; MATERIAL AS PER IS:2062
TYPE OF CORE	FIBRE	PLATFORM (HO PLATE)	BOTH SIDE-FULL LENGTH PLATFORM	PLATFORM (HO PLATE)	BOTH SIDE-FULL LENGTH PLATFORM	PLATFORM (HO PLATE)	BOTH SIDE-FULL LENGTH PLATFORM	PLATFORM (HO PLATE)	BOTH SIDE-FULL LENGTH PLATFORM
FACTOR OF SAFETY	5.6	CURRENT COLLECTION		CURRENT COLLECTION		CURRENT COLLECTION		CURRENT COLLECTION	
TENSILE STRENGTH	1770 N/MM SQ	MAX WHEEL LOAD	1875 TONNES(without impact)	MAX WHEEL LOAD	1875 TONNES(without impact)	MAX WHEEL LOAD	1875 TONNES(without impact)	MAX WHEEL LOAD	1875 TONNES(without impact)
MIN. BREAKING LOAD	84 KN	WEIGHT	2.5 TONNES	WEIGHT	33.25 TONNES	WEIGHT	33.25 TONNES	WEIGHT	33.25 TONNES
MAKE	USHA MARTIN	WHEEL BASE	1,500 mm	WHEEL BASE	1,500 mm	WHEEL BASE	1,500 mm	WHEEL BASE	1,500 mm
HEIGHT OF LIFT	7.0 METRES	WHEEL GUAGE	2,200 mm	WHEEL GUAGE	2,200 mm	WHEEL GUAGE	2,200 mm	WHEEL GUAGE	2,200 mm
CAPACITY	5.0 TON	RATED SPEEDS	FAST--15.0 mpm	RATED SPEEDS	FAST--15.0 mpm	RATED SPEEDS	FAST--15.0 mpm	RATED SPEEDS	FAST--15.0 mpm
RATED SPEEDS	FAST--5.0 mpm		SLOW--0.5 mpm		SLOW--15 mpm		SLOW--15 mpm		SLOW--30.0 mpm
SPEED CONTROL SYSTEM	FAST & SLOW SPEEDS IN ALL MOTION WILL BE ACHIVED THRU VVVF DRIVES								
CONTROL VOLT TAGE	110 VOLTS, 50 Hz, AC								
POWER SUPPLY	415 (L) 10% VOLTS, 50(H) 3% Hz, 3-PHASE, AC(4-WIRE)								
OPERATION	FROM PENDANT PUSH BUTTON STATION WITH LAPP CABLE WATER PROOF INDEPENDENTLY TRAVELLING ALONG THE CRANE SPAN + SHOULDER HELD RRC								
CLASS / DUTY	CLASS III (M-7) HEAVY DUTY / OUTDOOR OPERATION								
SPECIFICATIONS	THE CRANE CONFORMS TO IS:3177, IS:807, IS:800								

TECHNICAL SPECIFICATIONS

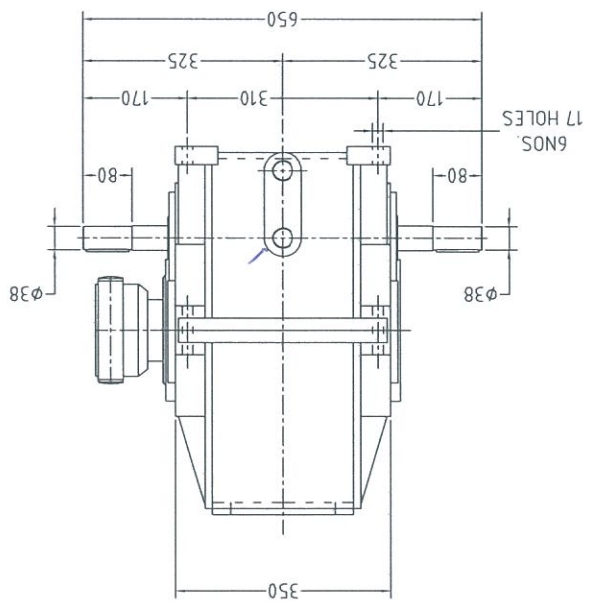
Approved sheet for manufacturing  
 Approved Bill Nirmal 5/11/2015

DG-GOLIATH	Qty:--1	Client :- M/s. ISGEC HEAVY ENGINEERING LTD	Job Reference No. :- 1327
Designed by DEEPAK	Checked by AMIT	Approved by - date R_ARYA-01/01/2015	Filename DES-1327
 <b>GRIP</b> ENGINEERS PVT. LTD.		DATA SHEET FOR 5.0 T DG-GOLIATH CRANE	
		DWG.NO.--GEP/1327/01	REV. Sheet 2/2



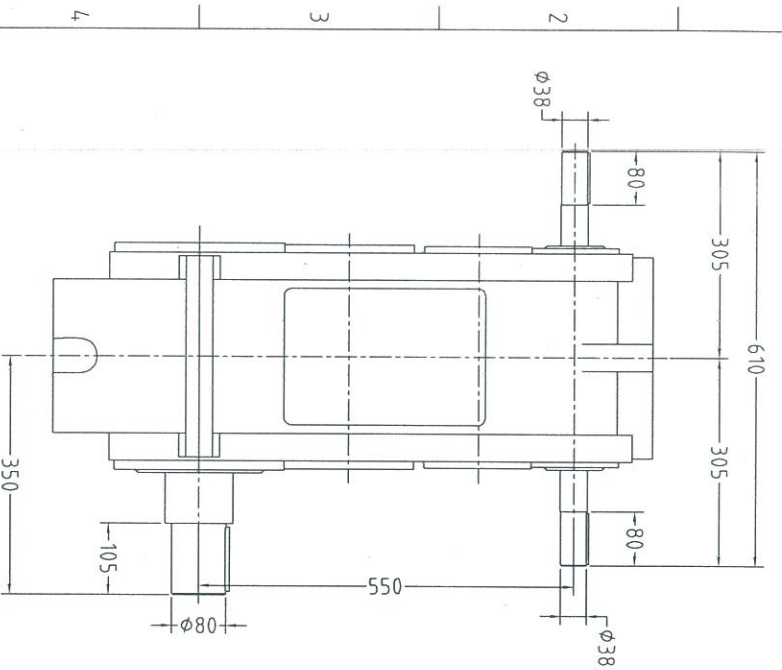
SR. NO.	DESCRIPTION	M.O.C.
01	GEAR BOX	FABRICATED
02	PINIONS	20Mncrs ✓
03	GEARS	8620 ✓

Sheet ③  
 Approved & manufactured  
 Plz. turned on 07/01/15.

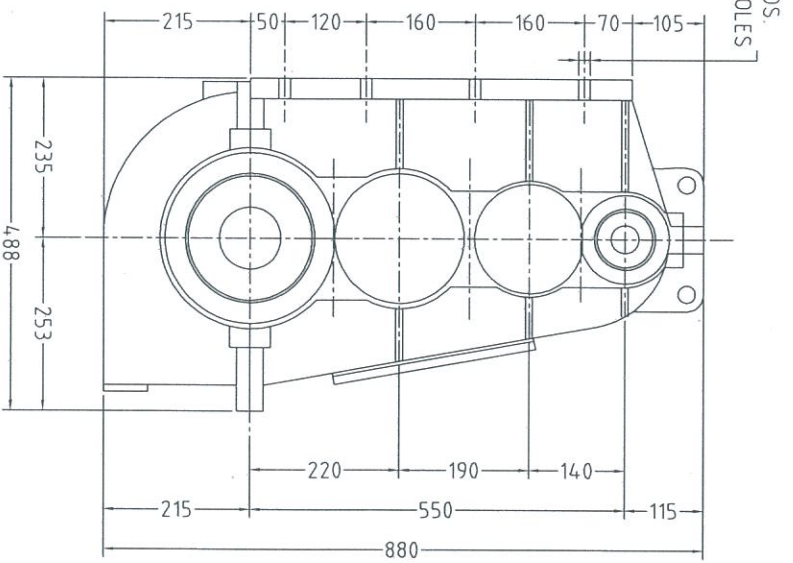


DG-GOLIATH City--1		Client :- M/S. ISGEC HEAVY ENGINEERING LTD		Job Reference No. :-1327	
Designed by	DEEPAK	Checked by	AMIT	Approved by - date	R. ARYA-06/01/2015
Scale	NTS	Filename	DES-1327	Date	06/01/2015
MHT G/BOX - HR-500+150			DWG.NO.-GEPL/1327/03		
Sheet	1/1	Edition	0		

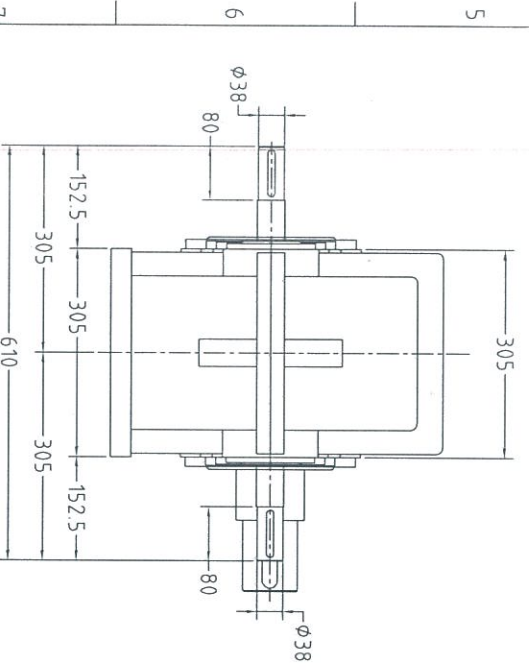
RevNo	Revision note	Date	Signature	Checked
8				



**FRONT VIEW**



**SIDE VIEW**



**TOP VIEW**

S.R. NO.	DESCRIPTION	M.O.C.
01	GEAR BOX	FABRICATED
02	PINIONS	20MnCr5
03	GEARS	8620

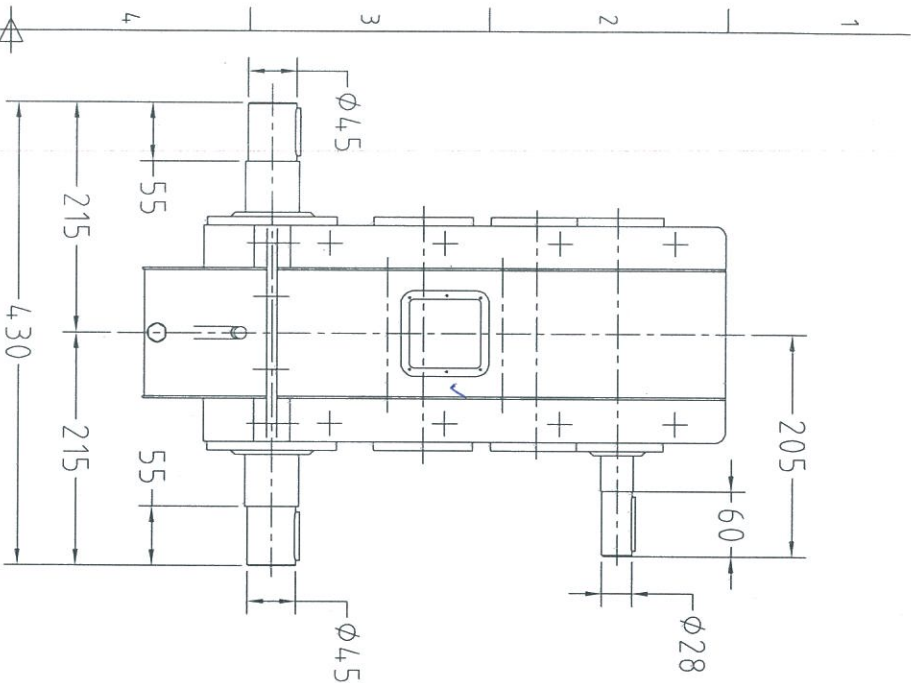
*Sheet Approved for manufacturing  
 Design & checked  
 06/01/2015*

DG-GOLIATH	Qty:-2	Client :- M/s. ISGET HEAVY ENGINEERING LTD.	Job Reference No. :- 1327
Designed by DEEPAK	Checked by AMIT	Approved by - date R_ARYA-06/01/2015	Date 06/01/2015
<b>GRIP</b> ENGINEERS PVT. LTD.		Filename DES-1327	Scale NTS
L.T. GEAR BOX - VC-550		DWG.NO:-GEPL/1327/04	Edition 0
			Sheet 1/1

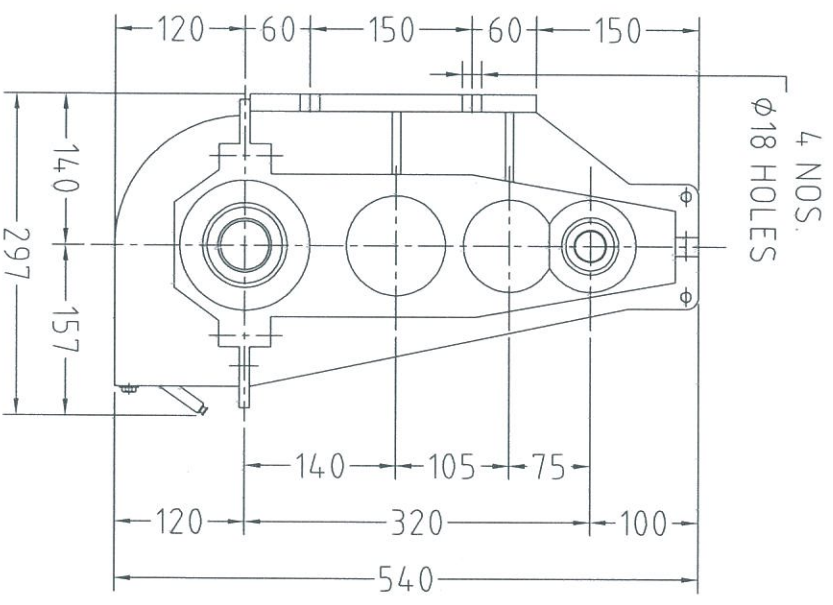
A B E F

8 7 6 5 4 3 2 1

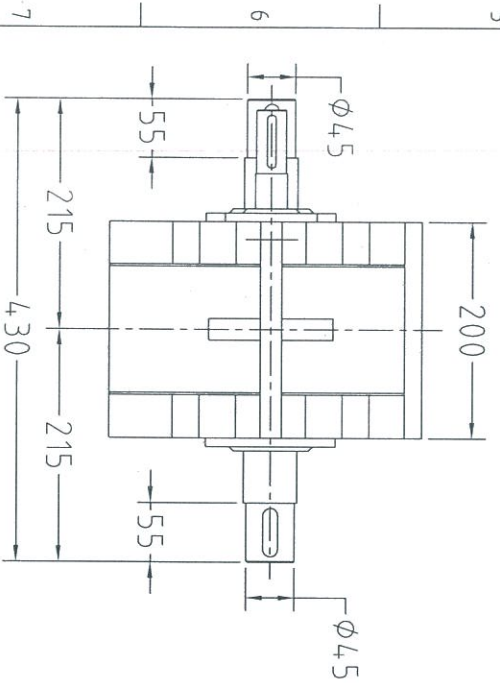
8 NOS  
 φ17 HOLES



**FRONT VIEW**




**SIDE VIEW**



**TOP VIEW**

Sr. No.	DESCRIPTION	M.O.C.
01	GEAR BOX	FABRICATED
02	PINIONS	20MnCr5
03	GEARS	8620

*Shear ③  
Approved for manufacturing  
Bilin  
Kirmel  
Sillipis*

DG-GOLIATH	Qty:-1	Client :- M/s. ISGEC HEAVY ENGINEERING LTD.	Job Reference No. :-1327
Designed by DEEPAK	Checked by AMIT	Approved by - date R_ARYA-06/01/2015	Filename DES-1327
		<b>GRIP</b> ENGINEERS PVT. LTD.	
C.T. GEAR BOX - VC-320		DWG.NO.-GEPL/1327/05	Edition 0
Sheet 1/1		Scale NTS	

A B E F

8 7 6 5 4 3 2 1