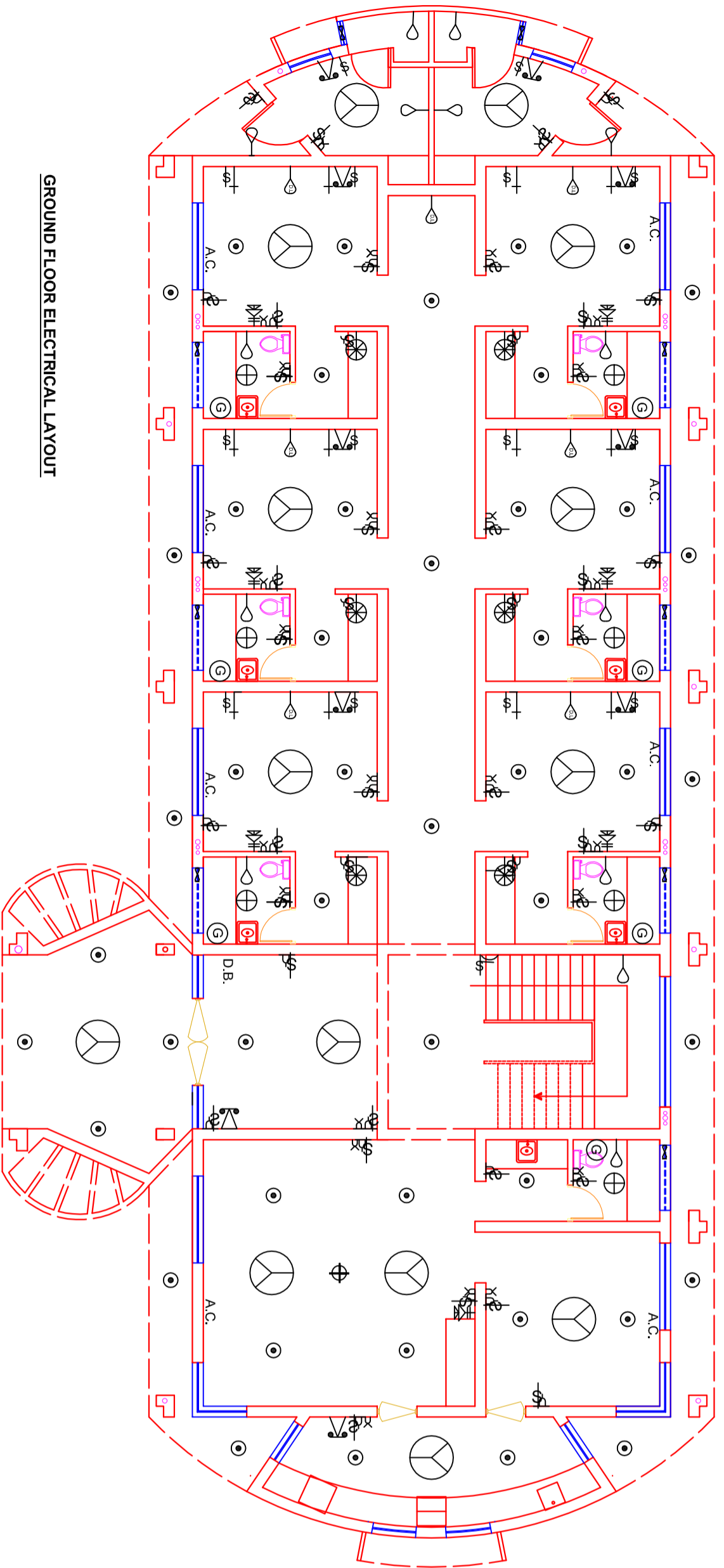


FIRST FLOOR ELECTRICAL LAYOUT



GROUND FLOOR ELECTRICAL LAYOUT

S.NO.	PARTICULARS	DESIGNATION	HT.	Nos
1.	CEILING FAN		N.A.	15
2.	CEILING LIGHT		N.A.	48
3.	DECORATIVE LIGHT		69"	6
4.	BRACKET LIGHT		93"	14
5.	BED LIGHT		36"	12
6.	GATE LIGHT		5-0"	4
7.	BED SWITCH		26"	12
8.	SWITCH BOARD		36"	48
9.	5 AMP. PLUG		36"	45
10.	15 AMP. PLUG		39" IN KITCHEN	27
11.	TELEVISION		29"	7
12.	TELEPHONE		19"	10
13.	CHANDELOR		18"	1
14.	EXHAUST FAN		7-0"	9
15.	BELL BUZZER		80"	0
16.	BELL SWITCH		36"	0
17.	GYSER		70"	7
18.	WALL FAN		80"	6
19.	METER BOARD		30"	1
20.	DISTRIBUTION BOARD		30"	1
21.	SMALL FAN		N.A.	7
22.	TWO WAY SWITCH		36"	2
23.	CHEMDULAR		N.A.	1
24.	SPLIT AC.		9-0"	1
25.	DRESS LIGHT		6-9"	7

NOTES
 1. ALL LIGHTING FIXTURE SHOULD BE LED
 2. OTHER EQUIPMENTS WHERE EVER AVAILABLE SHOULD BE STAR RATED

ELECTRICAL LAYOUT OF GUEST HOUSE IN BEANT COLLEGE OF ENGG. & TECH. AT GURDASPUR.
 DESIGNED FOR:- BEANT COLLEGE OF ENGG. & TECH.
 DESIGNED BY:- Dr. Harvinder Singh Dr. Hardeep Singh Rai
 ENDORSED BY:- Ac. Jaspal Kaur