

IS : 9376 - 1979

*Indian Standard*

**SPECIFICATION FOR APPARATUS FOR  
MEASURING AGGREGATE CRUSHING  
VALUE AND TEN PERCENT FINES VALUE**

( First Reprint MAY 1997 )

UDC 666.972.12 : 620.173.2.05

© *Copyright* 1980

**BUREAU OF INDIAN STANDARDS**  
MANAK BHAVAN, 9 BAHADUR SHAH ZAFAR MARG  
NEW DELHI 110002

# *Indian Standard*

## SPECIFICATION FOR APPARATUS FOR MEASURING AGGREGATE CRUSHING VALUE AND TEN PERCENT FINES VALUE

Cement and Concrete Sectional Committee, BDC 2

<i>Chairman</i>	<i>Representing</i>
DR H. C. VISVESVARAYA	Cement Research Institute of India, New Delhi
<i>Members</i>	
ADDITIONAL DIRECTOR, STANDARDS ( B&S ) DEPUTY DIRECTOR, STANDARDS ( B&S ) ( <i>Alternate</i> )	Research, Designs & Standards Organization ( Ministry of Railways ), Lucknow
SHRI K. C. AGGARWAL	Hindustan Prefab Ltd, New Delhi
SHRI C. L. KASLIWAL ( <i>Alternate</i> )	
SHRI K. P. BANERJEE	Larsen & Toubro Ltd, Bombay
SHRI HARISH N. MALANI ( <i>Alternate</i> )	
SHRI S. K. BANERJEE	National Test House, Calcutta
SHRI R. N. BANSAL	Beas Designs Organization, Nangal Township
SHRI T. C. GARG ( <i>Alternate</i> )	
CHIEF ENGINEER ( DESIGNS ) EXECUTIVE ENGINEER ( DESIGNS ) III ( <i>Alternate</i> )	Central Public Works Department, New Delhi
CHIEF ENGINEER ( PROJECTS ) DIRECTOR, IPRI ( <i>Alternate</i> )	Irrigation Department, Government of Punjab
DIRECTOR ( CSMRS ) DEPUTY DIRECTOR ( CSMRS ) ( <i>Alternate</i> )	Central Water Commission, New Delhi
DR R. K. GHOSH	Central Road Research Institute ( CSIR ), New Delhi
SHRI Y. R. PHULL ( <i>Alternate I</i> )	
SHRI M. DINAKARAN ( <i>Alternate II</i> )	
DR R. K. GHOSH	Indian Roads Congress, New Delhi
SHRI B. R. GOVIND	Engineer-in-Chief's Branch, Army Headquarters
SHRI P. C. JAIN ( <i>Alternate</i> )	
SHRI A. K. GUPTA	Hyderabad Asbestos Cement Products Ltd, Hyderabad
DR R. R. HATTIANGADI	The Associated Cement Companies Ltd, Bombay
SHRI P. J. JAGUS ( <i>Alternate</i> )	

( *Continued on page 2* )

© Copyright 1980

BUREAU OF INDIAN STANDARDS

This publication is protected under the *Indian Copyright Act* ( XIV of 1957 ) and reproduction in whole or in part by any means except with written permission of the publisher shall be deemed to be an infringement of copyright under the said Act.

( Continued from page 1 )

<i>Members</i>	<i>Representing</i>
DR IQBAL ALI	Engineering Research Laboratories, Hyderabad
SHRI S. R. KULKARNI	M. N. Dastur & Co ( Pvt ) Ltd, Calcutta
SHRI S. K. LAHA	The Institution of Engineers ( India ), Calcutta
SHRI B. T. UNWALLA ( <i>Alternate</i> )	
DR MOHAN RAI	Central Building Research Institute ( CSIR ), Roorkee
DR S. S. REHSI ( <i>Alternate</i> )	
SHRI K. K. NAMBIAR	In personal capacity ( <i>Ramanalaya, 11 First Crescent Park Road, Gandhinagar, Adyar, Madras</i> )
DR M. RAMAIAH	Structural Engineering Research Centre ( CSIR ), Roorkee
DR N. S. BHAL ( <i>Alternate</i> )	
SHRI G. RAMDAS	Directorate General of Supplies & Disposals, New Delhi
DR A. V. R. RAO	National Buildings Organization, New Delhi
SHRI J. SEN GUPTA ( <i>Alternate</i> )	
SHRI R. V. CHALAPATHI RAO	Geological Survey of India, Calcutta
SHRI S. ROY ( <i>Alternate</i> )	
SHRI T. N. S. RAO	Gammon India Ltd, Bombay
SHRI S. R. PINHEIRO ( <i>Alternate</i> )	
SHRI ARJUN RIJHSINGHANI	Cement Corporation of India Ltd, New Delhi
SHRI K. VITHAL RAO ( <i>Alternate</i> )	
SECRETARY	Central Board of Irrigation and Power, New Delhi
DEPUTY SECRETARY ( I ) ( <i>Alternate</i> )	
SHRI N. SIVAGURU	Roads Wing ( Ministry of Shipping and Transport )
SHRI R. L. KAPOOR ( <i>Alternate</i> )	
SHRI K. A. SUBBRAMANIAM	The India Cements Ltd, Madras
SHRI P. S. RAMACHANDRAN ( <i>Alternate</i> )	
SUPERINTENDING ENGINEER ( DESIGNS )	Public Works Department, Government of Tamil Nadu
EXECUTIVE ENGINEER ( SM&R DIVISION ) ( <i>Alternate</i> )	
SHRI L. SWAROOP	Dalmia Cement ( Bharat ) Ltd, New Delhi
SHRI A. V. RAMANA ( <i>Alternate</i> )	
SHRI B. T. UNWALLA	The Concrete Association of India, Bombay
SHRI Y. K. MEHTA ( <i>Alternate</i> )	
SHRI D. AJITHA SIMHA, Director ( Civ Engg )	Director General, ISI ( <i>Ex-officio Member</i> )

*Secretary*

SHRI M. N. NEELAKANDHAN  
Assistant Director ( Civ Engg ), ISI

( Continued on page 8 )

# *Indian Standard*

## SPECIFICATION FOR APPARATUS FOR MEASURING AGGREGATE CRUSHING VALUE AND TEN PERCENT FINES VALUE

### 0. FOREWORD

**0.1** This Indian Standard was adopted by the Indian Standards Institution on 20 December 1979, after the draft finalized by the Cement and Concrete Sectional Committee had been approved by the Civil Engineering Division Council.

**0.2** The Indian Standards Institution has already published a series of standards on methods of testing cement and concrete. It has been recognized that reproducible and repeatable test results can be obtained only with standard testing equipment capable of giving the desired level of accuracy. The Sectional Committee has, therefore, decided to bring out a series of specifications covering the requirements of equipments used for testing cement and concrete, to encourage their development and manufacture in the country.

**0.3** Accordingly, this standard has been prepared to cover the requirements of equipment used for measuring aggregate crushing value and ten percent fines value. The aggregate crushing value and the ten percent fines value give a relative measure of the resistance of an aggregate to crushing. The methods of measuring aggregate crushing value and ten percent fines value using the equipment covered in this standard have been specified in IS : 2386 ( Part IV )-1963\*.

**0.4** In the formulation of this standard, due weightage has been given to international co-ordination among the standards and practices prevailing in different countries in addition to relating it to the practices in the field in this country.

**0.5** For the purpose of deciding whether a particular requirement of this standard is complied with, the final value, observed or calculated, expressing the result of a test or analysis, shall be rounded off in accordance with IS : 2-1960†. The number of significant places retained in the rounded off value should be the same as that of the specified value in this standard.

---

\*Methods of test for aggregates for concrete: Part IV Mechanical properties.

†Rules for rounding off numerical values ( *revised* ).

## 1. SCOPE

**1.1** This standard covers requirements of the apparatus for measuring aggregate crushing value and ten percent fines value.

**1.1.1** Two sizes of apparatus are covered in this standard, one with 150 mm cylindrical cell and the other with 75 mm cylindrical cell.

## 2. APPARATUS

**2.1** The apparatus shall consist of an open-ended cell with base plate and plunger, metal measure and tamping rod as described in Fig. 1.

## 3. MATERIALS

**3.1** The material of construction of different parts of the apparatus, specified in 2 shall be as given in Table 1.

---

**TABLE 1 MATERIAL OF CONSTRUCTION**

SL No.	PART	MATERIAL	SPECIAL REQUIREMENTS, IF ANY
(1)	(2)	(3)	(4)
i)	Cylindrical cell	Mild steel Case hardened or tempered tool steel	Hardness of inside surface shall not be less than 650 VH or equivalent
ii)	Base plate	do	do
iii)	Plunger	do	do
iv)	Tamping rod	do	do
v)	Metal measure	do	Shall have sufficient rigidity to retain its form under rough usage

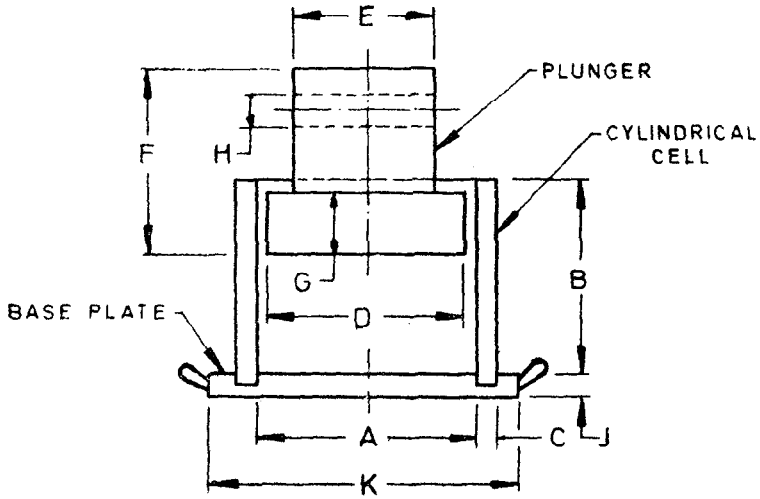
---

## 4. DIMENSIONS

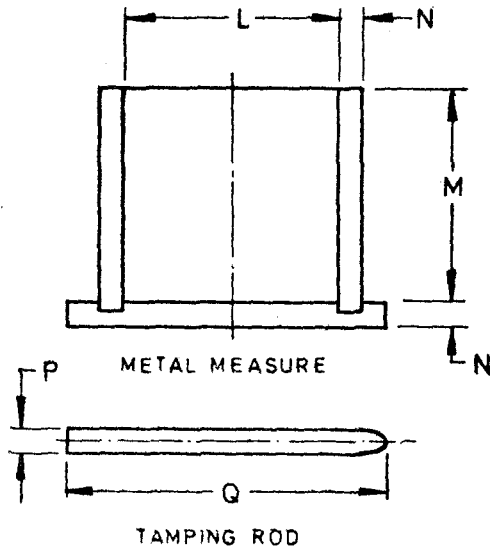
**4.1** The dimensions with tolerances of the different parts ( *see 2.1* ) for the two sizes of apparatus specified in **1.1.1** shall be as given in Table 2.

## 5. CONSTRUCTION

**5.1** The cylindrical cell shall be open ended. The plunger and base plate. The inside faces of the cell and the faces of the plungers and base plates which come in contact with aggregates shall be machined.



ASSEMBLY OF CYLINDRICAL CELL WITH  
BASE PLATE AND PLUNGER



NOTE — The symbols in the figures are described in Table 2.  
FIG. 1 APPARATUS FOR MEASURING AGGREGATE CRUSHING VALUE  
AND TEN PERCENT FINES VALUE

**5.1.1** The base plate shall be provided with a 1.5 mm groove to ensure proper seating of the cylindrical cell. The base plate shall also be provided with slant handles.

**5.1.2** A scale with graduations in mm and 50 mm long shall be suitably attached to the stem of the plunger.

**5.2** Metal measure shall be machined smooth inside.

**5.3** The tamping rod shall be of circular cross section and rounded at one end.

**TABLE 2 DIMENSIONS**

( Clause 4.1, and Fig. 1 )

Sl No.	PART	150 mm CYLINDRICAL CELL	75 mm CYLINDRICAL CELL
(1)	(2)	(3) mm	(4) mm
	<i>i) Cylindrical cell:</i>		
	a) Internal diameter <i>A</i>	150 ± 0.5	75 ± 0.5
	b) Height <i>B</i>	130 to 140	70 to 80
	c) Wall thickness <i>C</i> , Min	15	10
	<i>ii) Plunger:</i>		
	a) Diameter of piston <i>D</i>	148 ± 0.5	73 ± 0.5
	b) Diameter of stem <i>E</i>	100 to 145	50 to 70
	c) Height <i>F</i>	100 to 115	65 to 75
	d) Depth of piston <i>G</i> *	25	20
	e) Diameter of hole <i>H</i> *	20	10
	<i>iii) Base plate:</i>		
	a) Thickness <i>J</i> , Min	6	6
	b) Side length of square <i>K</i> †	200 to 230	110 to 115
	<i>iv) Tamping rod:</i>		
	a) Diameter <i>P</i> *	16	8
	b) Length <i>Q</i>	450 to 600	300 to 350
	<i>v) Metal measure:</i>		
	a) Diameter <i>L</i>	115 ± 0.5	60 ± 0.5
	b) Height <i>M</i>	180 ± 0.5	90 ± 0.5
	c) Wall thickness <i>N</i> , Min	5	5

NOTE — The *Italic Capital* letters in col 2, succeeding the descriptions of dimensions specified in this Table correspond to those indicated in Fig. 1.

\*Dimensions *G*, *H* and *P* are nominal.

†Dimension *K* is not critical.

## **6. MARKING**

**6.1** The following information shall be clearly and indelibly marked on each component of the apparatus in a way that it does not interfere with the performance of the apparatus:

- a) Name of manufacturer or his registered trade-mark or both,
- b) Date of manufacture, and
- c) Size of apparatus.

### **6.2 BIS Certification Marking**

The product may also be marked with Standard Mark.

**6.2.1** The use of the Standard Mark is governed by the provisions of the Bureau of Indian Standards Act, 1986 and the Rules and Regulations made thereunder. The details of conditions under which the licence for the use of Standard Mark may be granted to manufacturers or producers may be obtained from the Bureau of Indian Standards.



( Continued from page 2 )

Instruments for Cement and Concrete Testing Subcommittee,  
BDC 2 : 10

*Convener*

DR. IQBAL ALI

*Representing*

Engineering Research Laboratories, Hyderabad

*Members,*

PROF B. M. AHUJA

SHRI T. P. EKAMBARAM

DR R. K. GHOSH

Indian Institute of Technology, New Delhi

Highways Research Station, Madras

Central Road Research Institute ( CSIR ),  
New Delhi

SHRI K. L. SETHI ( *Alternate* )

SHRI H. K. GUHA

All India Instruments Manufacturers and Dealers  
Association, Bombay

SHRI V. K. VASUDEVAN ( *Alternate* )

SHRI P. J. JAGUS

SHRI D. A. WADIA ( *Alternate* )

SHRI M. R. JOSHI

The Associated Cement Companies Ltd, Bombay

Research & Development Organization  
( Ministry of Defence ), Pune

SHRI Y. P. PATHAK ( *Alternate* )

SHRI E. K. RAMACHANDRAN

PROF C. K. RAMESH

DR R. S. AYYAR ( *Alternate* )

SHRI M. V. RANGA RAO

DR K. C. NARANG ( *Alternate* )

DR S. S. REHSI

National Test House, Calcutta

Indian Institute of Technology, Bombay

Cement Research Institute of India, New Delhi

Central Building Research Institute ( CSIR ),  
Roorkee

SHRI J. P. KAUSHISH ( *Alternate* )

SHRI M. M. D. SETH

Public Works Department, Government of  
Uttar Pradesh

SHRI J. P. BHATNAGAR ( *Alternate* )

SHRI H. C. VERMA

Associated Instrument Manufacturers ( India )  
Private Ltd, New Delhi

SHRI A. V. SHASTRI ( *Alternate* )

## BUREAU OF INDIAN STANDARDS

### **Headquarters:**

Manak Bhavan, 9 Bahadur Shah Zafar Marg, NEW DELHI 110002

Telephones: 323 0131, 323 3375, 323 9402

Fax : 91 11 3234062, 91 11 3239399, 91 11 3239382

Telegrams : Manaksanstha  
(Common to all Offices)

### **Central Laboratory :**

Plot No. 20/9, Site IV, Sahibabad Industrial Area, Sahibabad 201010

Telephone

8-77 00 32

### **Regional Offices:**

Central : Manak Bhavan, 9 Bahadur Shah Zafar Marg, NEW DELHI 110002 323 76 17

\*Eastern : 1/14 CIT Scheme VII M, V.I.P. Road, Maniktola, CALCUTTA 700054 337 86 62

Northern : SCO 335-336, Sector 34-A, CHANDIGARH 160022 60 38 43

Southern : C.I.T. Campus, IV Cross Road, CHENNAI 600113 235 23 15

†Western : Manakalaya, E9, Behind Marol Telephone Exchange, Andheri (East),  
MUMBAI 400093 832 92 95

### **Branch Offices::**

'Pushpak', Nurmohamed Shaikh Marg, Khanpur, AHMEDABAD 380001 550 13 48

‡Peenya Industrial Area, 1st Stage, Bangalore-Tumkur Road,  
BANGALORE 560058 839 49 55

Gangotri Complex, 5th Floor, Bhadbhada Road, T.T. Nagar, BHOPAL 462003 55 40 21

Plot No. 62-63, Unit VI, Ganga Nagar, BHUBANESHWAR 751001 40 36 27

Kalaikathir Buildings, 670 Avinashi Road, COIMBATORE 641037 21 01 41

Plot No. 43, Sector 16 A, Mathura Road, FARIDABAD 121001 8-28 88 01

Savitri Complex, 116 G.T. Road, GHAZIABAD 201001 8-71 19 96

53/5 Ward No.29, R.G. Barua Road, 5th By-lane, GUWAHATI 781003 54 11 37

5-8-56C, L.N. Gupta Marg, Nampally Station Road, HYDERABAD 500001 20 10 83

E-52, Chitaranjan Marg, C-Scheme, JAIPUR 302001 37 29 25

117/418 B, Sarvodaya Nagar, KANPUR 208005 21 68 76

Seth Bhawan, 2nd Floor, Behind Leela Cinema, Naval Kishore Road,  
LUCKNOW 226001 23 89 23

NIT BUilding, Second Floor, Gokulpat Market, NAGPUR 440010 52 51 71

Pattiputra Industrial Estate, PATNA 800013 26 23 05

Institution of Engineers (India) Building 1332 Shivaji Nagar, PUNE 411005 32 36 35

T.C. No. 14/1421, University P. O. Palayam, THIRUVANANTHAPURAM 695034 6 21 17

---

\*Sales Office is at 5 Chowringhee Approach, P.O. Princep Street,  
CALCUTTA 700072 27 10 85

†Sales Office is at Novelty Chambers, Grant Road, MUMBAI 400007 309 65 28

‡Sales Office is at 'F' Block, Unity Building, Narashimaraja Square,  
BANGALORE 560002 222 39 71