

Regenerative Design- Transcending Sustainability

Patron



Dr. Sehijpal Singh,
Principal
Guru Nanak Dev Engineering
College, Ludhiana

Advisors



Dr. Jagbir Singh,
Head, Civil Engg. Dept.



Dr. Arvind Dhir,
Exec. Dir. STEP-GNDEC



Ar. Akanksha Sharma,
Head, School of Arch.

Resource Persons



Ms. Sangita Kapoor
Regenerative Practitioner &
Sustainability Consultant,
Blue Planet



Sanjay Prakash
Architect
SHiF



Rajpal Singh
Architect
Peaceful by Design

International Experts

Craig W Griffiths

Regenerative Practitioner
Berlin



Laurent Fournier
Architect
Kolkata

Online

Denise DeLuca

Civil Engineer
Wild Hazel,
USA



Nuno Da Silva
Regenerative Designer
Lucida,
Portugal

Sandra Marques

Regenerative Thinker
Lucida,
Portugal



Organized by

**Department of Civil Engineering
&**

School of Architecture

Guru Nanak Dev Engineering College

Ludhiana (Punjab)

(An Autonomous Institute NAAC 'A' Grade)

In collaboration with

Blue Planet

Kolkata

Venue:

Guru Nanak Dev Engineering College
Gill Road, Gill Park, Ludhiana, Punjab

**International Faculty
Development
Program**

December 02 to 06, 2024

About Us



Guru Nanak Dev Engineering College (GNDEC), established in 1956 by Nankana Sahib Education Trust (NSET), is a prestigious institute, with a commitment to admit 70% students from rural areas.

Department of Civil Engineering is the oldest department of the institute with various UG + PG programs accredited since 2004 by NBA. It is running 3 PG programs in MTech (Structural Engg., Geotechnical Engg. & Environmental Science & Engg.) and one UG programme (B.Tech in Civil Engineering) The department has the state of art facilities for R&D activities and is actively involved in consultancy work.

GNDEC School of Architecture, Founded in 2019, by NSET, under the aegis of Guru Nanak Dev Engineering College with Bachelor of Architecture program recognized by the Council of Architecture.

Blue Planet (NGO) has fostered collaboration with the academia, industry, & practicing Architects, Engineers, & Designers across India. Focused on working towards net positive future for collective wellbeing since 2015, Blue Planet strives to achieve social impact that endures over time through a holistic integrated systems approach for societal resilience, to restore planetary health & ecological systems, The blend of technical innovation & traditional wisdom helps build skills & awareness among students, faculty, & local communities for Regenerative Development.

Faculty comprises a global collective of visionary professionals, each a practitioner in their unique domain, reshaping the built environment by weaving together advanced formal practices with enduring wisdom of traditional knowledge systems.

Drawn from diverse geographies and disciplines, these practicing professionals are on a mission to collaborate with the academia to rebuild harmony between Nature & the built environment to exist together in a symbiotic balanced and respectful relationship.

REGISTRATION FEE : Rs. 3000/-



Scan for Registration & Payment

Last date for Registration: November 28, 2024

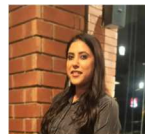
Coordinators



Er. Avneet Kaur

Mob-9779778161

Email- avneetkivil@gndec.ac.in



Ar. Dharini Middha

Mob- 9464950913

Email- ar.dharinimiddha@gmail.com

Note:

All participants need to register & pay 'Registration fee' in advance.

Key Topics

- Green Design, Sustainable Design & Regenerative Design
- Life Cycle Assessment
- Circular Design Thinking
- De-Carbonising Built Structures
- Bio-Climatic Design for Climate Smart Structures
- Regenerative Systems Thinking
- Regenerative Design & Development
- Bio-mimicry for Regenerative Design
- Living Systems & Living Building Challenge
- Indigenous Wisdom in Local Construction
- Responsible Architecture with Eco-friendly Materials
- Alternative Building Techniques
- **The Sustainable Way Forward** – Interactive Round table discussion among faculty and practicing Architects & Engineers for market ready graduates
- Outdoor Excursion for Exploring Community Engagement
- Innovative Pedagogy for Climate Smart Education



Scan for Detailed Schedule